



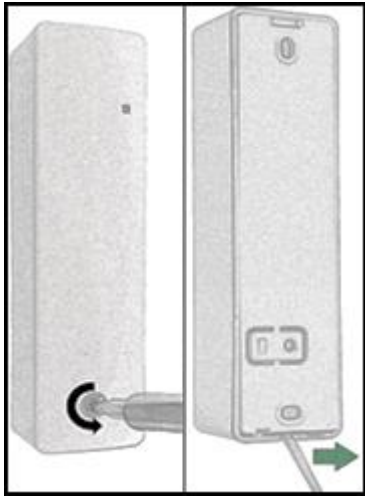
QUICK INSTALLATION GUIDE

PULSE COUNTER DEVICE (LAN-WMBUS-G2-P)



Recommended mounting instructions:

- For best horizontal range, place the device upright
- For best vertical range, place the device horizontally
- For maximum range, mount the device and receiver so they have the same polarization
- Avoid placing directly against metallic objects to maximize range
- Mount with either double-sided tape or screws
- Cable length from meter must be less than three meters



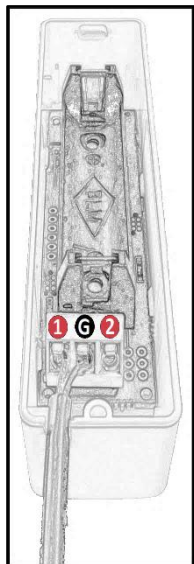
Step 1a (left):

Open the device using a torx screwdriver on the front screw. Unscrew by turning counterclockwise.

Step 1b (right):

Separate the back piece by using, for example, a screwdriver at the bottom of the device as in the right picture.

Once opened, the PCB will be visible on the inside.



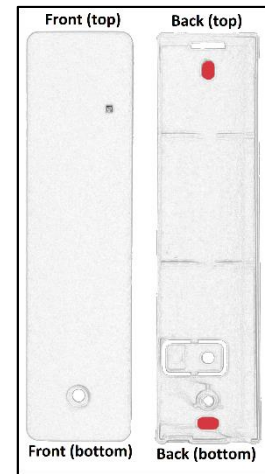
Remove battery before mounting/unmounting cables!

Step 2:

The device supports up to two meter cables. Cut out the plastic at the bottom according to the picture before mounting any cable.

Connect one cable from the meter to the first input (1) and the other cable to (G). For a second meter, connect one cable to second input (2) and the other to ground (G). Do NOT let a cable cover the hole at the bottom when closing the lid.

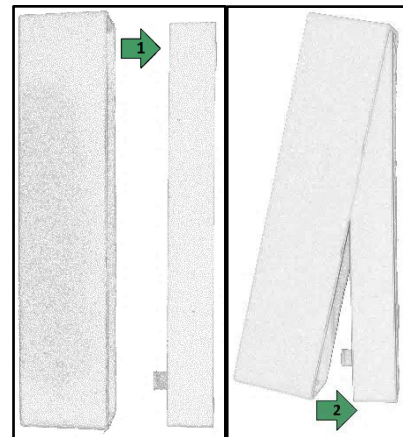
Insert the battery again. The red LED at the front will turn on for a few seconds and then turn off - The device is now initiated. During the first four minutes after startup the LED will blink for every pulse counted.



Step 4:

Mount the back piece according to the recommended mounting instructions on the first page.

If screws are used, fasten the screws in the holes marked by red in the picture.

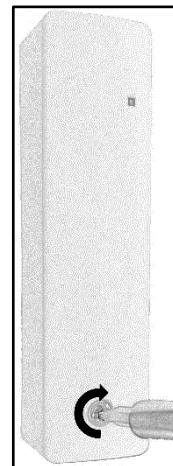


Step 5a (left):

See picture in **Step 4** on the orientation of the device, then insert the top part of the front piece onto the top part of the back piece (1).

Step 5b (right):

Insert the bottom part of the front piece onto the bottom part of the back piece (2).



Step 6:

Put the torx screw (from **Step 1**) in the hole at the front and tighten the screw using a torx screwdriver.

Make sure that the device is securely mounted.

Installation is complete!