

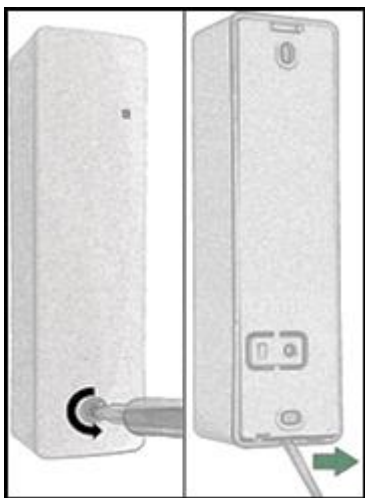


QUICK INSTALLATION GUIDE

AC FINDING DEVICE (LAN-WMBUS-G2-ACF)

Recommended mounting instructions:

- For best horizontal range, place the device upright
- For best vertical range, place the device horizontally
- For maximum range, mount the device and receiver so they have the same polarization
- Avoid placing directly against metallic objects to maximize range
- Mount with either double-sided tape or screws



Step 1a (left):

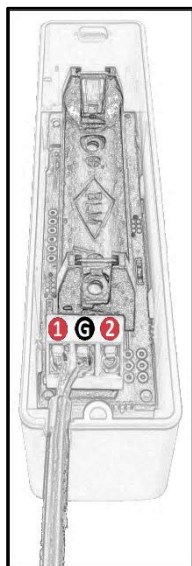
Open the device using a torx screwdriver on the front screw. Unscrew by turning counterclockwise.

Step 1b (right):

Separate the back piece by using, for example, a screwdriver at the bottom of the device as in the right picture.

Once opened, the PCB will be visible on the inside.

Remove battery before mounting/unmounting cables!



Step 2:

Connect the cable to the AC-finder according to the picture.

- Connect WHITE cable to the input marked by (1)
- Connect BLACK cable to input marked by (G)
- Connect RED cable to the input marked by (2)

Note: Do NOT let a cable cover the hole at the bottom.

Once the cables are connected, insert the battery again.

Note: During the first 10 minutes after startup, a red LED on the front of the device lights up if **no** 50 Hz field is detected. To test, hold onto the cable of the detector (not to the detector part itself) and move the detector part against the cable to be monitored as in **Step 3**. Move the detector part around until the red LED turns off.

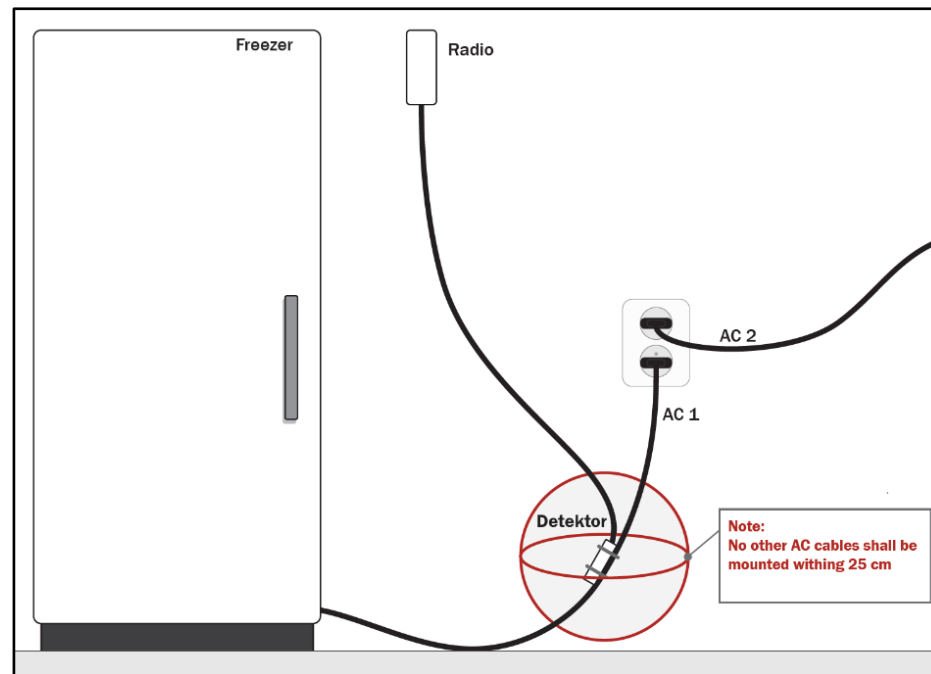
Step 3:

If the test performed in **Step 2** was okay, then the detector part can be mounted on the AC-cable (AC 1) as pictured below. Use two zip-ties on the detector part as shown in the picture and ensure that the detector part is attached tightly to the AC-cable. Make sure the red LED on the front turns off when the detector part has been installed.

Note: If the red LED is still on when detector part has been mounted, it could be that the detector part has been attached too close to the earth cable inside the AC-cable. In this case, twist the detector part on the AC-cable until the LED turns off.

Note: The AC-cable should be mounted in the indentation of the detector part, so the cable and detector are as close as possible to each other.

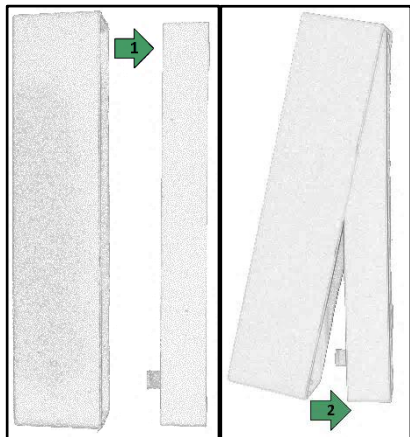
Note: If possible, unplug the AC-cable after installing the detector part to verify that the installation works by checking that the red LED on the front of the device turns on when the AC-cable is unplugged. If this test is done 10 minutes after inserting the battery, then remove battery for 30 seconds, insert it again, and then redo this test.



Step 4:

Mount the back piece to a wall according to the recommended mounting instructions on the first page.

If screws are used, fasten the screws in the holes marked by red in the picture.



Step 5a (left):

See picture in **Step 4** on the orientation of the device, then insert the top part of the front piece onto the top part of the back piece (1).

Step 5b (right):

Insert the bottom part of the front piece onto the bottom part of the back piece (2).

Step 6:

Put the torx screw (from **Step 1**) in the hole at the front and tighten the screw using a torx screwdriver.

Make sure that the device is securely mounted.

Installation is complete!

